

# RADIUS - OVERVIEW

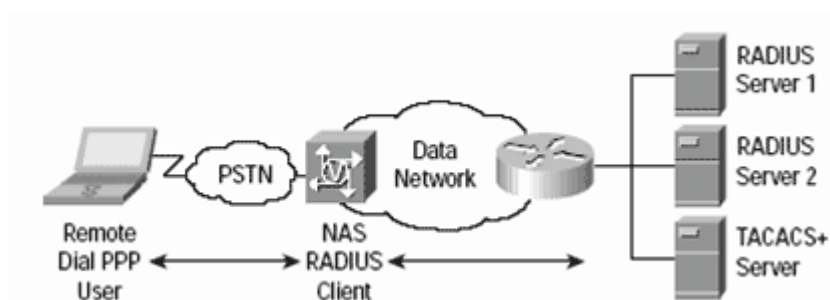
[http://www.tutorialspoint.com/radius/what\\_is\\_radius.htm](http://www.tutorialspoint.com/radius/what_is_radius.htm)

Copyright © tutorialspoint.com

RADIUS is a protocol for carrying information related to authentication, authorization, and configuration between a Network Access Server that desires to authenticate its links and a shared Authentication Server.

- RADIUS stands for Remote Authentication Dial In User Service.
- RADIUS is an AAA protocol for applications such as Network Access or IP Mobility
- It works in both situations, Local and Mobile.
- It uses Password Authentication Protocol *PAP*, Challenge Handshake Authentication Protocol *CHAP*, or Extensible Authentication Protocol *EAP* protocols to authenticate users.
- It look in text file, LDAP Servers, Database for authentication.
- After authentication services parameters passed back to NAS.
- It notifies when a session starts and stop. This data is used for Billing or Statistics purposes.
- SNMP is used for remote monitoring.
- It can be used as a proxy.

Here is a Simple Network Diagram of Radius:



Loading [MathJax]/jax/output/HTML-CSS/jax.js