

QTP - AUTOMATED TESTING PROCESS

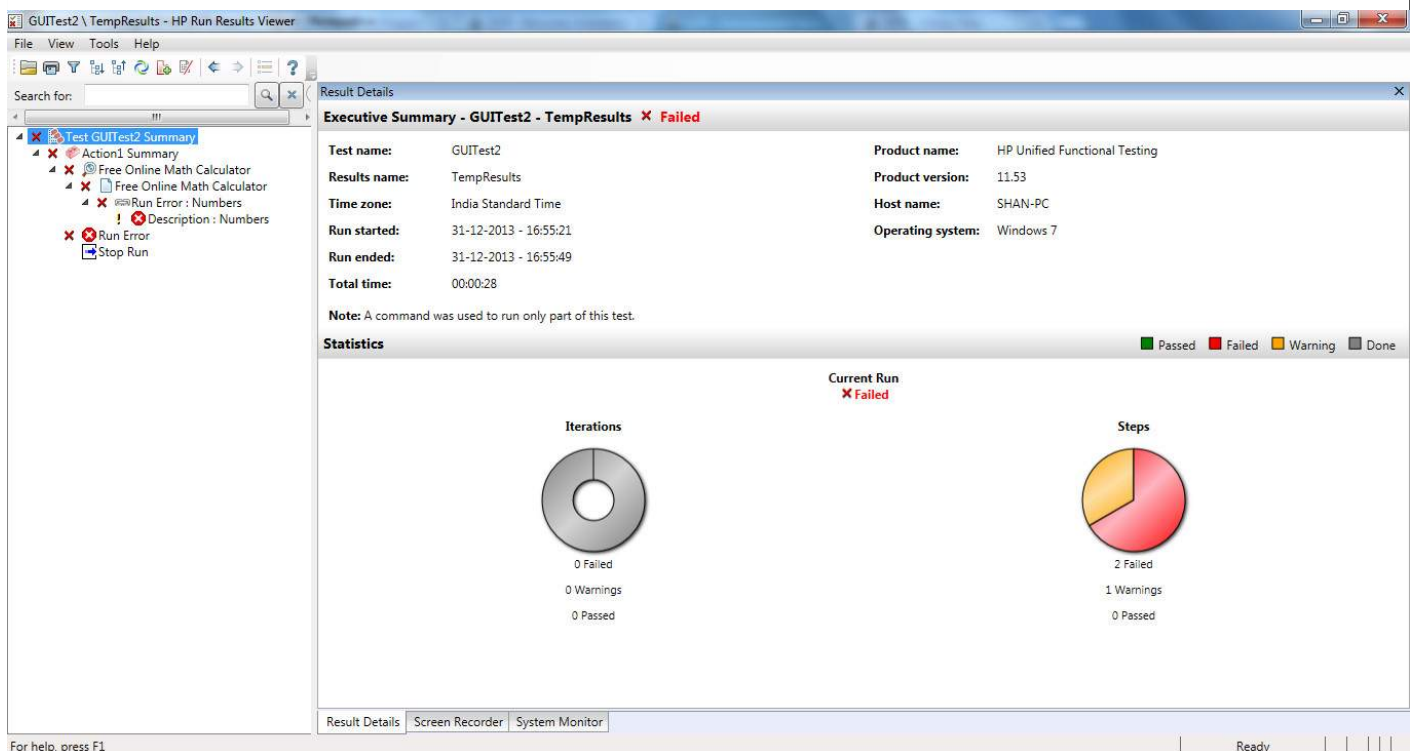
<http://www.tutorialspoint.com>

Copyright © tutorialspoint.com

Test Results:

The Test Results Window gives us sufficient information to show the steps passed, failed etc. Results window opens automatically after execution of the test as per default settings.

- Steps Passed
- Steps Failed
- Environment Parameters
- Graphical Statistics



Operations performed in Test Results:

Converting Results to HTML

In the Results Viewer window, Navigate to "File" → "Export to File", Export Run Results dialog box opens as shown below:

The 'Export Run Results' dialog box is shown with the following options:

- Report type:** A dropdown menu set to 'Step details'.
- Export range:** Two radio buttons: 'All nodes' (selected) and 'Selected node'.
- Export format:** Three radio buttons: 'Short' (selected), 'Detailed', and 'User-defined XSL' (with an adjacent text box).

Export

Cancel

We can choose what type of report to be exported. It can be short results, Detailed Results or even we can select nodes. Upon Selecting the File Name and exporting it, the file would be saved as .HTML File

Filtering the Results:

Results can be filtered based Status, Node Type, Iterations. It can be accessed by using Filter Button in the "Test Results Window"

The screenshot shows a 'Filter' dialog box with the following sections:

- Filter what:** A text input field.
- Status:** A list of checkboxes with 'Done' and 'Warning' selected.
 - ☐ Passed
 - ☐ Failed
 - ☒ Done
 - ☒ Warning
- Node type:** A list of checkboxes with 'Step' selected.
 - ☐ Iteration
 - ☒ Action
 - ☒ Step
 - ☐ Reporter
 - ☐ Checkpoint / Output Value
- Iterations:** A section with two options: 'All' (selected) and 'From iteration' (with input fields for '1' to '1').

Buttons on the right: 'Filter', 'Clear All', and 'Cancel'.

Raising Defects

Defects can be logged into QC directly from the Test Results Window pane by accessing "Tools" → "Add Defect" which open's connection to ALM as shown below:

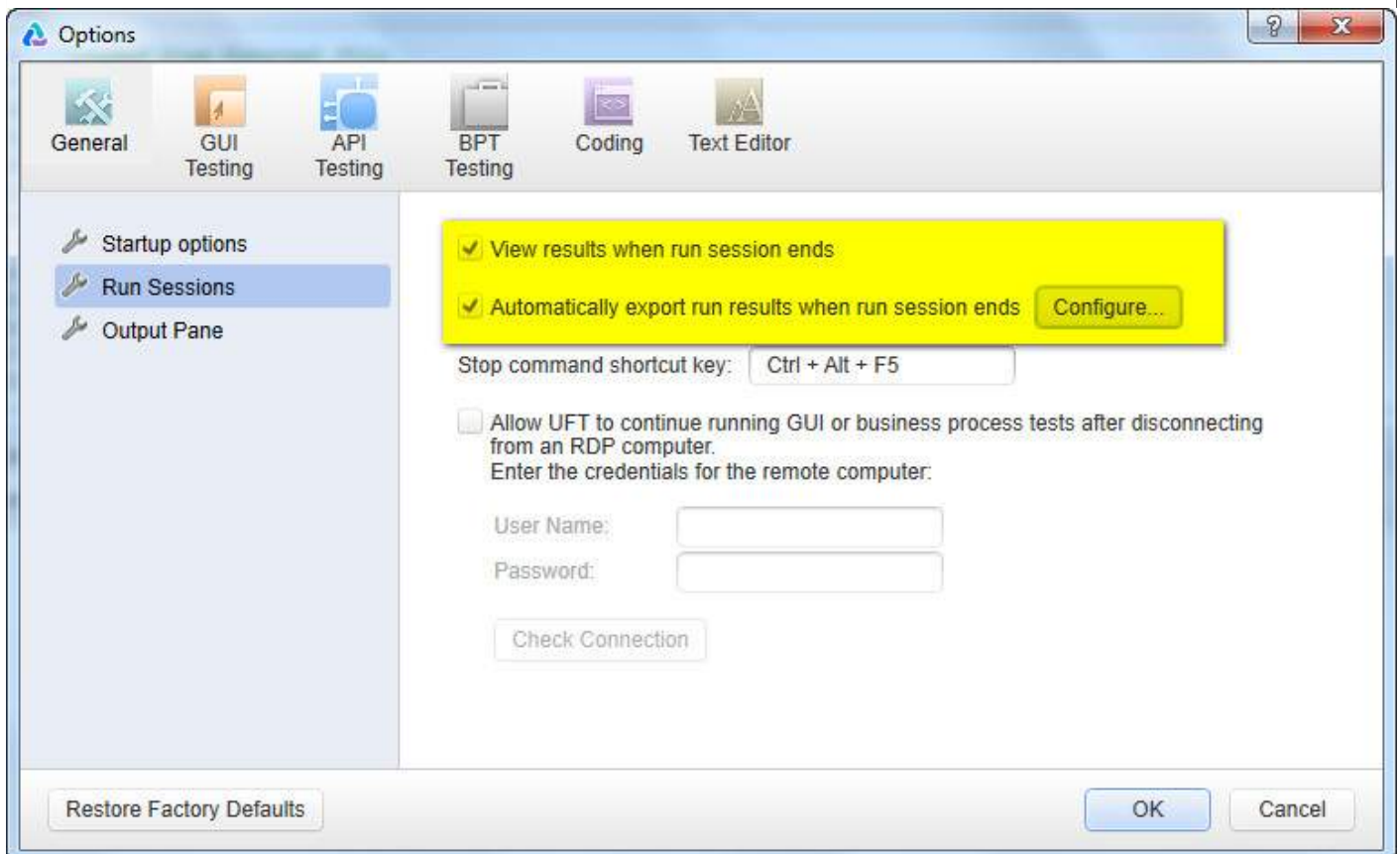
The screenshot shows the 'HP ALM Connection' dialog box with the following steps:

- Step 1: Connect to server** (expanded):
 - Server URL:** A text input field with a dropdown arrow. Example: `http://server:8080/qcbin`
 - User name:** A text input field.
 - Password:** A text input field.
 - Connect:** A button.
- Step 2: Login to project** (collapsed): Indicated by a downward arrow.



Test Results:

The Automatic Test Results Window can be configured under "Tools" → "Options" → "Run Sessions" Tab. We can turn it off if required and also we can switch ON "Automatically Export Results when session Ends"



Upon Errors, the screenshot or the movie can be recorded based on the settings. The same can be configured under "Tools" → "Options" → "Screen Capture" Tab. We can save the screenshot or movies based on 3 conditions.

- For Errors
- Always
- For Errors and Warnings

