

ECLIPSE - SHORTCUTS

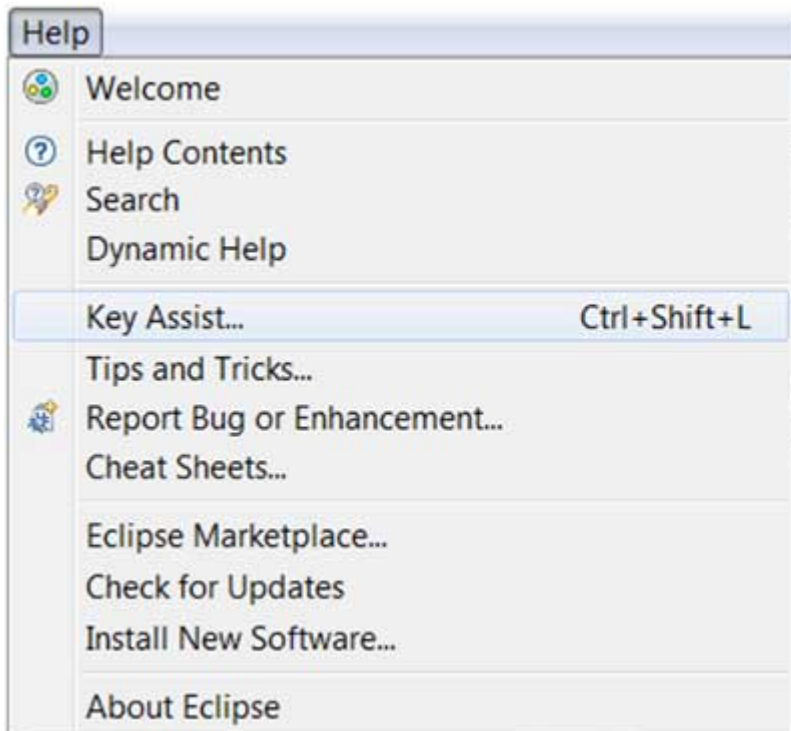
http://www.tutorialspoint.com/eclipse/eclipse_shortcuts.htm

Copyright © tutorialspoint.com

About Shortcuts

You can navigate the Eclipse User Interface using only the keyboard by:

- Using mnemonics associated with menus and menu items
- Using mnemonics associated with controls in a dialog box or view or editor
- Using accelerators associated with actions such as menu items and buttons on the toolbar



The Key Assist action which can be invoked by pressing Ctrl + Shift + L shows us all the accelerators or shortcut keys available in Eclipse.

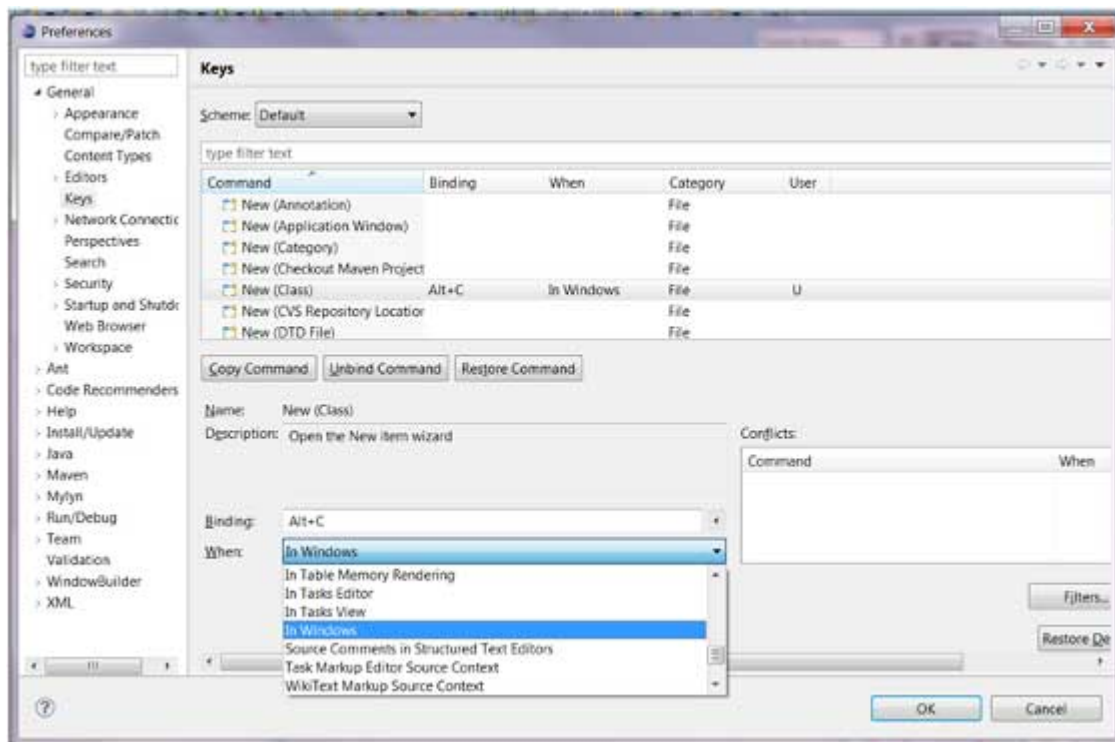
Activate Editor	F12
Activate Task	Ctrl+F9
Add Javadoc Comment	Alt+Shift+J
All Instances	Ctrl+Shift+N
Backward History	Alt+Left
Build All	Ctrl+B
Change Method Signature	Alt+Shift+C
Close	Ctrl+F4
Close All	Ctrl+Shift+F4
Collapse All	Ctrl+Shift+Numpad_Divide
Commit...	Ctrl+#
Content Assist	Ctrl+Space
Context Information	Ctrl+Shift+Space
Copy	Ctrl+Insert

Cut	Shift+Delete
Deactivate Task	Ctrl+Shift+F9
Debug	F11
Debug Ant Build	Alt+Shift+D, Q
Debug JUnit Test	Alt+Shift+D, T
Debug Java Applet	Alt+Shift+D, A
Debug Java Application	Alt+Shift+D, J

Press "Ctrl+Shift+L" to open the preference page.

The key combination assigned to an action can be changed using the Keys preference page. There are many commands or actions in Eclipse for which there are no shortcut keys. This preference page also allows you to assign shortcut keys by to these actions.

For example, to assign Alt + C as the shortcut key to trigger the command that brings up the New Class dialog box select New Class in the command list, navigate to the Bindings text box and then press Alt + C. The "when dropdown list" allows you to select a context in which the shortcut key is valid. Ensure that there are no conflicts for the selected key combination and click on the OK button.



Now you can press Alt + C to bring up the New Class wizard.